

BAV SEWAGE PUMPS



- Liquid temperature : 0~40°C / 32~104°F
- HP range : 1/5~3/4HP / 150~550W
- PH : 6~8
- Rated Speed : 2900 / 3450 rpm
- Protection calss : IP68
- Maximum depth : 8M

Features

- 1 · Power cable export insulation, no leaking issue
- 2 · Optional removable strainer
- 3 · Non-clogging vortex impeller, the maximum pass solid 35mm

Applications

- 1 · Sump pit, wastewater drainage

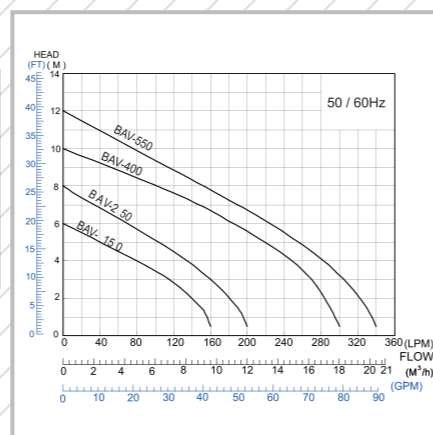
Specification

Model No.	Output HP	W mm	Outlet mm inch	Pass solid (mm)	Max Flow(LPM)	LPM Flow @ Head					Max Head(M)	Dimension L x W x H(mm)	Weight Kg
						1.5M	3M	4.5M	6M	7.5M			
BAV-150	1/5	150	32 1-1/4"	10	160	150	115	60	-	-	6	190 x 130 x 280	6
BAV-250	1/3	250	40 1-1/2"	25	200	190	160	120	70	15	8	190 x 130 x 280	9
BAV-400	1/2	400	50 2"	30	300	290	270	235	185	125	10	200 x 135 x 285	11
BAV-550	3/4	550	50 2"	35	340	330	305	270	225	170	12	236 x 145 x 352	12

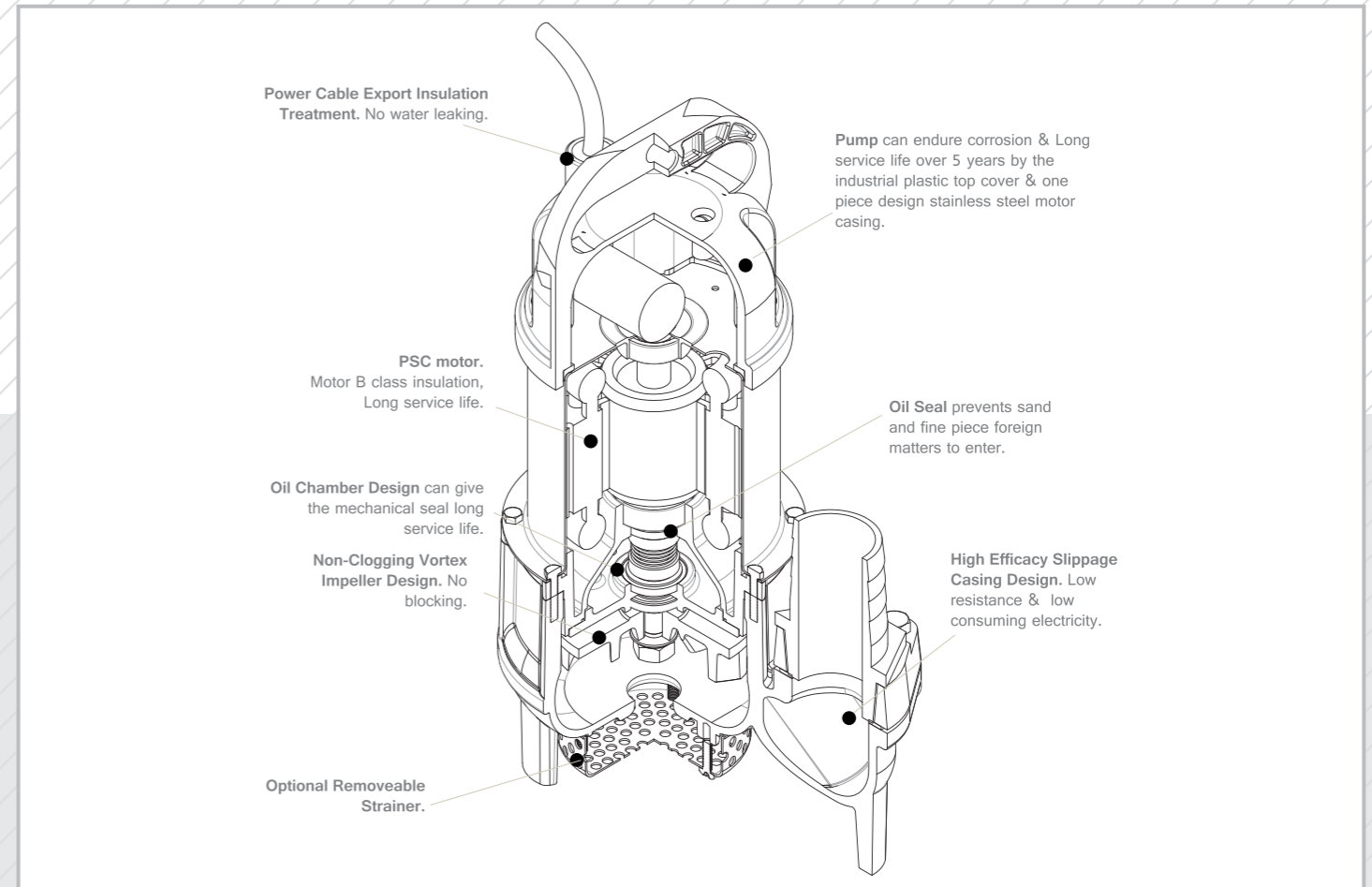
Remarks: Model No. ends with "S" is included with stainless steel strainer for dirty water discharge.

Remarks: Model No. ends with "A" is equipped with float switch.

Curve

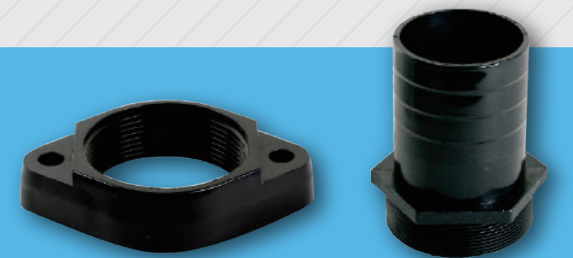


Sectional View



Standard Accessories

Model No.	Accessories	Pedestal Type
BAV-150	Hose connection	
BAV-250	Hose connection	
BAV-400	Flange, Hose connection	TOS-SG
BAV-550	Flange, Hose connection	TOS-SG



Dimension

Model	Dimension									
	L	W	W1	W2	H	H1	H2	H3	H4	G
BAV-150	181	132	-	51	305	165	95	-	83	1.25
BAV-250	197	135	-	57	315	165	105	-	88	1.5
BAV-400	225	146	-	57	350	210	120	87	112	2
BAV-550	225	146	83	108	365	220	1220	87	112	2

