



# F-WATER TUNNELS

[www.frukko.com](http://www.frukko.com)

# F - WATER TUNNELS

NEW!

## F - WATER TUNNELS



Tunnels have the National Technical Assessment ITB-KOT-2020/1617, edition 1.

Purpose: pressureless distribution, retention and infiltration of rainwater and pre-treated domestic sewage from household sewage treatment plants and septic tanks.

Tunnels can be used in permeable and poorly permeable grounds (in accordance with the assembly instructions) above the groundwater level.

Tunnels can be connected into larger lines.

### LIGHT



F - WATER TUNNELS weighs only 10 kg and can be moved manually without the need of mechanical devices.

### FAST

The lightness and simplicity of installation make the operations quick and safe.



### REDUCED DIGGING



F-WATER TUNNELS permits a shallow and non-invasive intervention, ideal in areas with groundwater.

### RESISTANT



The arch structure ensures DRENING a high mechanical strength. The system can be installed under heavy trafficked areas.

### CAPACITY



Each DRENING contains up to 310 liters of water per m<sup>2</sup> of surface.

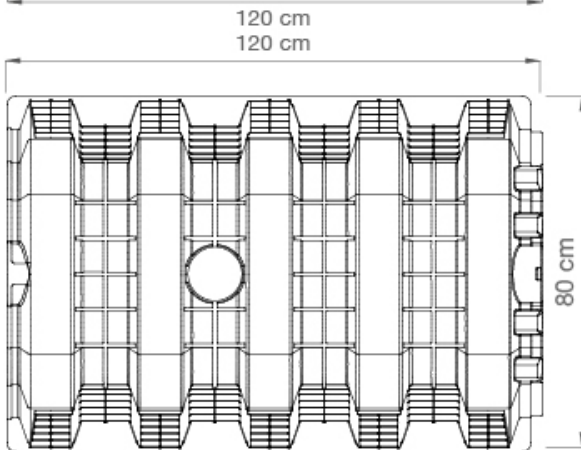
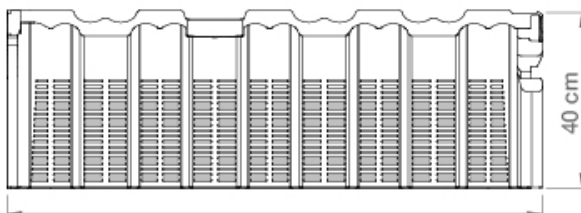
# F - WATER TUNNELS

## TECHNICAL DATA

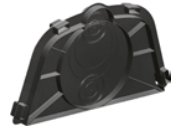
### TUNNELS



Actual size [cm]	120x80x40
Installed product's length [cm]	117
Material	HDPE
Weight [kg]	9,52
Capacity [l]	310
Side infiltration surface [cm <sup>2</sup> ]	2.800
Packaging size [cm]	120x80x230
No. pieces per pallet [szt.]	40

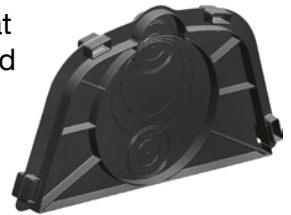


### CLOSING CUP

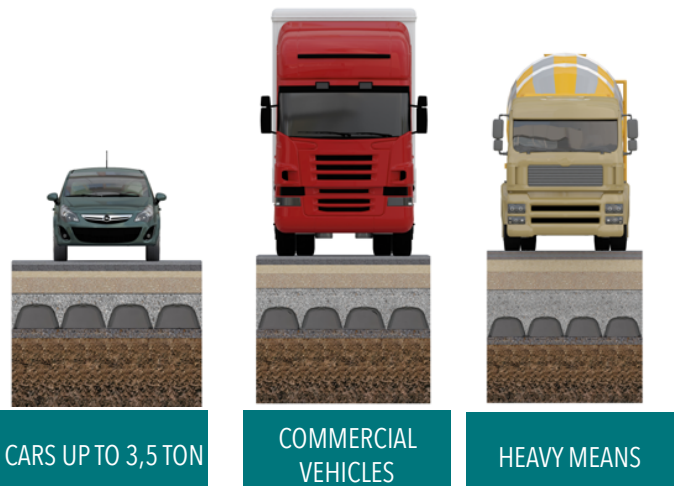


Actual size [cm]	70x40
Thickness [cm]	6
Material	HDPE
Weight [kg]	1,81
Side infiltration surface [szt.]	Zgodna z wymaganiami projektu

This cap has to be placed at the beginning and at the end of each line of elements in order to close the system. It is already designed to be drilled in order to insert the pipes (diameters from 60 to 320 mm).



### DREINING APPLICABLE LOADS:



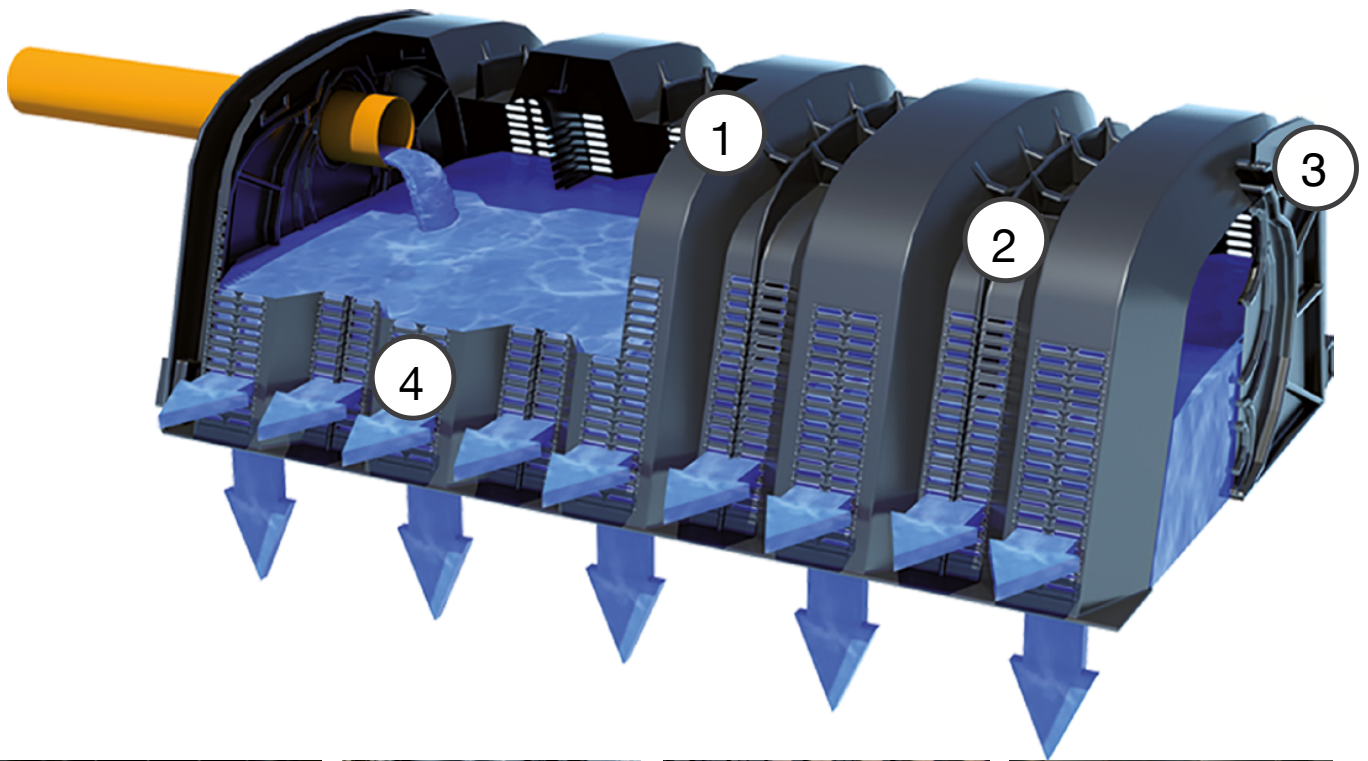
CARS UP TO 3,5 TON

COMMERCIAL VEHICLES

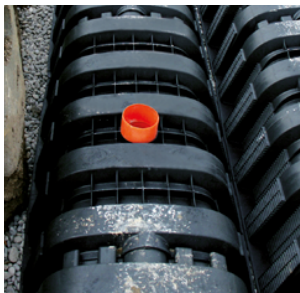
HEAVY MEANS

# F - WATER TUNNELS

## DRENNING CONCEPT



① Upper part designed for the insertion of a venting system or an inspection conduct.



② Reinforced arch structure to guarantee the resistance to heavy loads..



③ Double overlapping locking system that guarantees an interlocking installation and a stable connection between the elements.



④ Completely opened base with side holes, with a permeable surface of 12.400 cm<sup>2</sup> per element.